

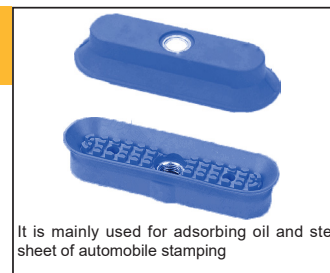
## MAOF single layer oval type suction cup for metal plate

Selection of pad assembly

Example :

**MAOF - 20X80 - N - 02 M**

① Diameter of suction cup      ② Material of suction cup      ③ Mounting thread      ④ Installation method



It is mainly used for adsorbing oil and steel sheet of automobile stamping

### ① Diameter of suction cup

Unit: mm

code	15X50	25X60	20X80	30X90	40X80	40X110	50X100	60X120	70X140
Disc diameter	15X50	25X60	20X80	30X90	40X80	40X110	50X100	60X120	70X140

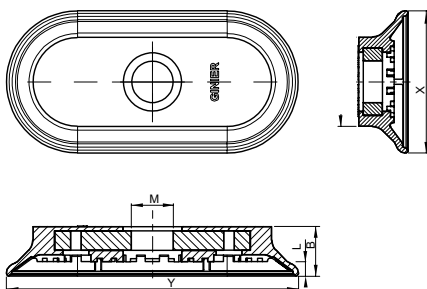
### ③ Mounting thread

code	02F
Thread size	G1/4
Specifications	Internal thread

### ② Material of suction cup

code	texture of material	hardness ShoreA	Operating temperature range	colour	Applicable diameter of suction cup
N	Nitrile rubber	A55/S	-20~120°C	black	15X50~70X140
NBU	Nitrile rubber	A40/S	-20~120°C	blue	15X50~70X140

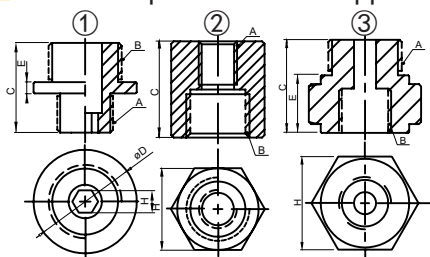
### Outline dimension drawing



Unit: mm

model	Suction cup material	Installation modeM	parameter		
			Y x X	B	L
MAOF 15X50	N NBU	02F	50X15	G1/4	3.5
MAOF 20X80			85X25	G1/4	3
MAOF 25X60			65X25	G1/4	3
MAOF 30X90			95X35	G1/4	2.3
MAOF 40X80			85X45	G1/4	2.5
MAOF 40X110			115X45	G1/4	5
MAOF 50X100			105X55	G1/4	4
MAOF 60X120			125X65	G1/4	5
MAOF 70X140			145X75	G1/4	6.5

### Size and specification of supporting adapter



① External thread - external thread

② Internal thread - internal thread

③ External thread - external thread

model	Installation mode	parameter					
		A	B	C	D	E	H
M6M-01M	External thread - external thread	M6X1	G1/8	15.5	16.5	1.5	3
M6M-02M		M6X1	G1/4	15.5	16.5	1.5	3
M10M-01M		M10X1.25	G1/8	16	18.5	2	4
M10M-02M		M10X1.25	G1/4	16	18.5	2	4
M10M-03M		M10X1.25	G3/8	16	22	2	4
M14M-01M		M14X1.5	G1/8	16	18.5	2	5
M14M-02M		M14X1.5	G1/4	16	18.5	2	5
M14M-03M		M14X1.5	G3/8	16	22	2	5
01M-01M		G1/8	G1/8	18	16.5	2	4
01M-02M		G1/8	G1/4	18	16.5	2	4
02M-02M	G1/4	G1/4	18	18.5	2	4	
M6F-M8F	External thread - external thread	M6X1	M8X1.25	20	-	-	12
M8F-M8F		M8X1.25	M8X1.25	20	-	-	12
M10F-01F		M10X1.25	G1/8	20	-	-	12
M10F-02F		M10X1.25	G1/4	20	-	-	17
01F-01F		G1/8	G1/8	20	-	-	12
02F-02F		G1/4	G1/4	20	-	-	17
02F-03F	G3/8	G3/8	20	-	-	19	
M10M-01F	External thread - external thread	M10X1.25	G1/8	18	-	-	17
M10M-02F		M10X1.25	G1/4	18	-	-	17
01M-02F		G1/8	G1/4	18	-	-	21
02M-02F		G1/4	G1/4	18	-	-	21
03M-02F		G3/8	G1/4	21	-	-	21